

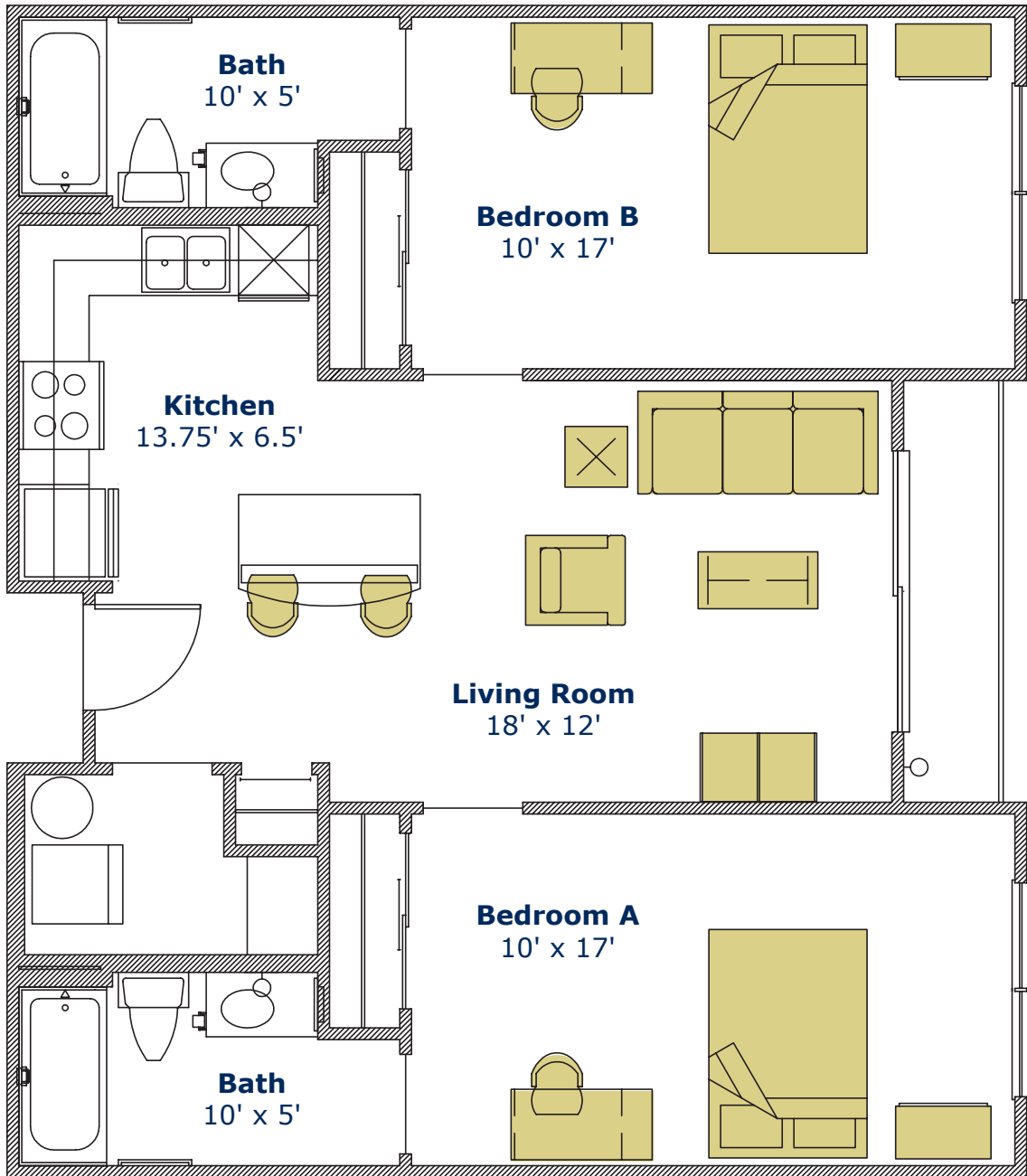
b1-alt.

Two Bedroom
Two Bath
868 SF*



* Dimensions are approximate

Amenities, features and rates are subject to change without notice. GrandMarc at The Corner is a privately owned and operated student living community. GrandMarc at The Corner complies fully with the provisions of the Equal Housing Opportunity Laws and nondiscrimination laws. The apartment homes have been designed and constructed to be accessible in accordance with those laws.



b1

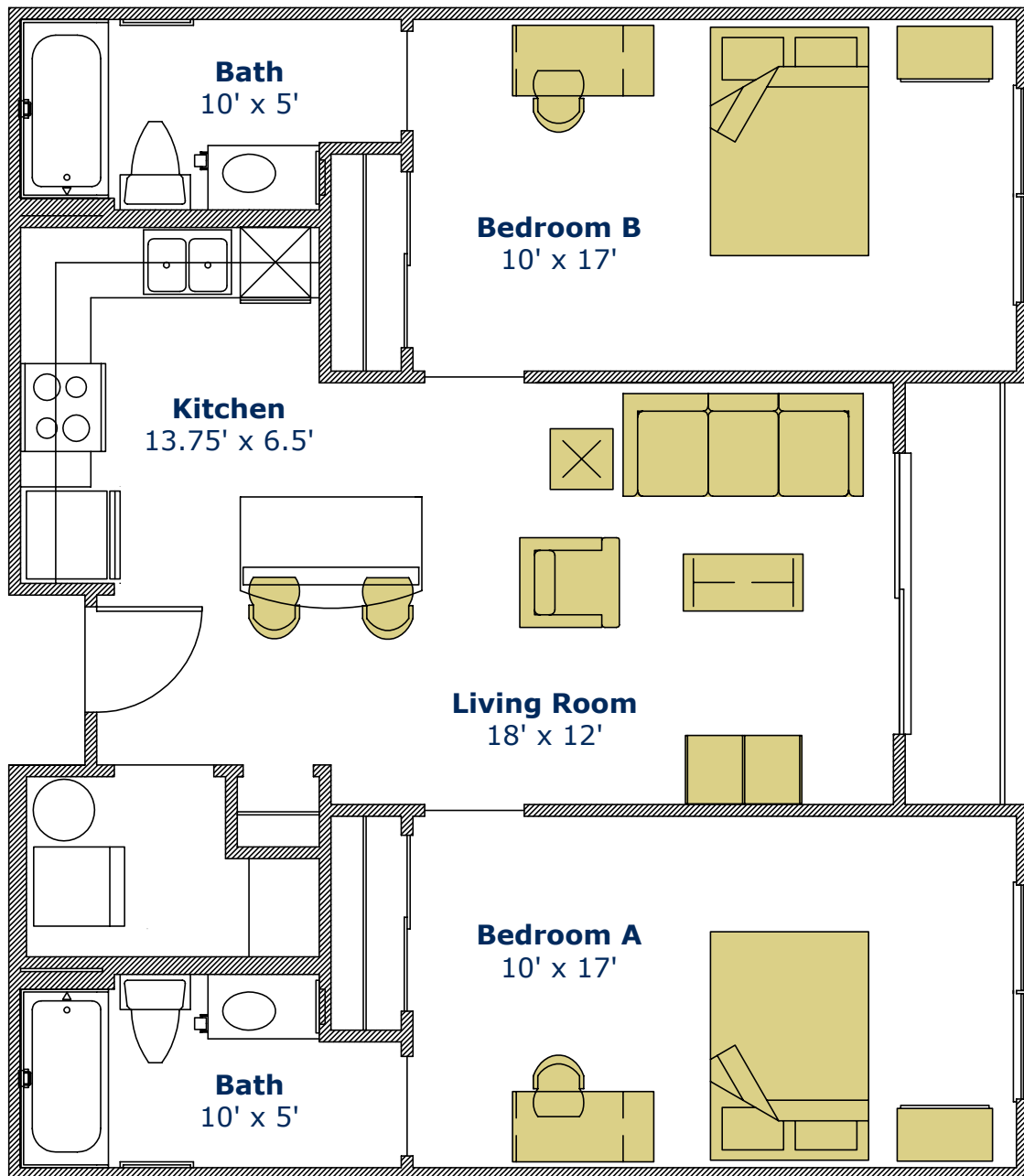
Two Bedroom
Two Bath
914 SF*

Vertical Blind: 104" wide x 80" tall
Bedroom Blinds: 34.5" wide x 59" tall



* Dimensions are approximate

Amenities, features and rates are subject to change without notice. GrandMarc at The Corner is a privately owned and operated student living community. GrandMarc at The Corner complies fully with the provisions of the Equal Housing Opportunity Laws and nondiscrimination laws. The apartment homes have been designed and constructed to be accessible in accordance with those laws.



b1-HC

Two Bedroom
Two Bath
914 SF*

Vertical Blind: 104" wide x 80" tall
Bedroom Blinds: 34.5" wide x 59" tall



* Dimensions are approximate

Amenities, features and rates are subject to change without notice. GrandMarc at The Corner is a privately owned and operated student living community. GrandMarc at The Corner complies fully with the provisions of the Equal Housing Opportunity Laws and nondiscrimination laws. The apartment homes have been designed and constructed to be accessible in accordance with those laws.